



Ordering Manual

CSM Workshop Products

DEC Trade Training Centres



Approved Supplier
SCCB Contract No. 1006
Expiry: 08/02/2013

Supplier under NSW Government
Contract 1006 Lot8b

This document has a variety of indicative images which may vary from final product



Contact Information:

CSM Inservis

Phone: 02 9524 5177
Fax: 02 9524 2066
Email: inservis@csm-office.com.au
Website: www.csm-gov.com.au

Postal Address: PO Box 288
Caringbah NSW 1495
Street Address: 49 Cawarra Road,
Caringbah NSW 2229

CSM Industrial

Phone: 02 9540 2111
Email: sales@csm-industrial.com.au
Website: www.csm-industrial.com.au



Contents

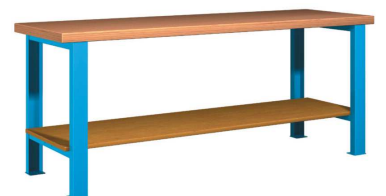
Contact Information:.....	2
Work Benches & Vices.....	5
CSM Modular Work bench with Shelf (1750L)	6
CSM Modular Work bench with Spreader Bar (1750L)	7
CSM Modular Work bench with Storage Cabinet (1750L)	8
CSM Modular Work bench with Shelf (2000L)	9
CSM Modular Work bench with Spreader Bar (2000L)	10
CSM Modular Work bench with Storage Cabinet (2000L)	11
CSM Vices	12
Cabinets & Heavy Duty Storage	13
CSM Open Free Standing Cabinet with 5 Shelves.....	14
CSM Free Standing Cabinet with 5 Shelves	15
CSM Free Standing Storage Cabinet with 5 Shelves & Power Outlets	16
CSM Free Standing Storage Cabinet with 7 Drawers, Pegboard and Storage Tub System .	17
CSM Modular Heavy Duty Storage Cabinet System with Shelves and Drawers	18
CSM Modular Heavy Duty Storage Cabinet System with Shelves, Drawers and Leaf Doors to Secure Shelves.....	19
CSM Mobile Modular Storage Cabinet	20
CSM Modular Storage Cabinet	21



Mobile & Tool Racking	22
CSM Mobile Storage Rack.....	23
CSM Tool Wall	24
Shelving	25
CSM Light Duty Shelving System – for School Bag storage	26
CSM Welded Infinity Book Shelving System.....	27
CSM Long Span Shelving	28
High Density Storage, Lockers & Flammable Liquids Cabinets.....	29
CSM Self Based Rolling Storage Unit	30
Lockers.....	31
Locking Options	33
Configurations (Standard door Locker).....	33
Flammable Liquids Cabinet – 250L.....	34
Accessories	35
Quick Release Peg Board Hooks	36
Rails for Plastic Containers	36
Individual Drawer Fit out Options.....	36

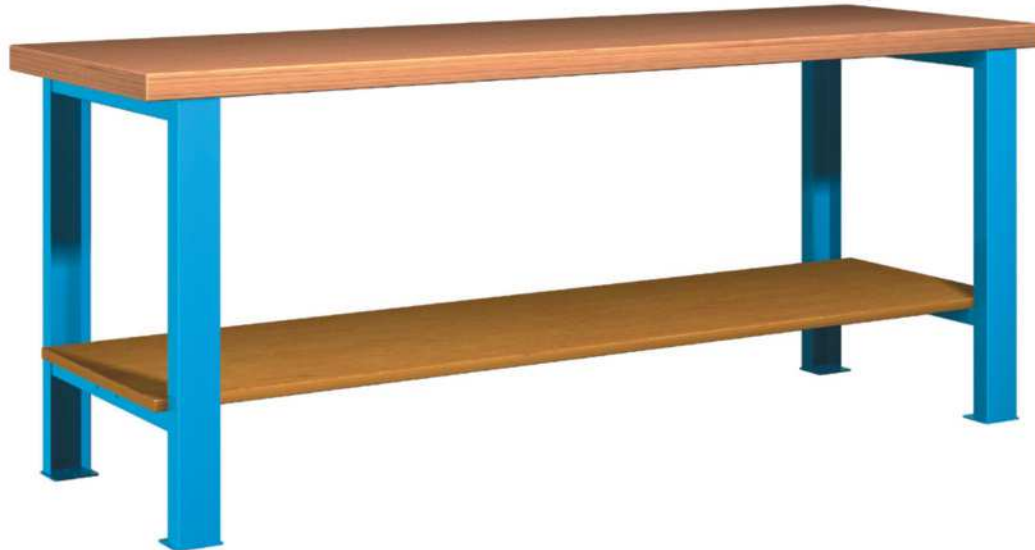


Work Benches & Vices





CSM Modular Work bench with Shelf (1750L)



Order codes: WB-S-1750G Galvanised Top

WB-S-1750P Plywood Top

(ICS-10-001)

CSM Modular Workbench with galvanised or plywood bench top and lower shelf (Plywood).

Dimensions: 1750L x 750W x 890H

Comprises: 2 x powder coated welded steel leg sections.

Bench Top: 30mm thick plywood top or 33mm timber cored galvanised steel.

Lower Shelf: 600mm wide

Leg Colour: Black

Leg Configuration: 2.5mm pressed metal

Pre drilling top with vice bolt hole pattern \$50 per vice (specify approximate position and vice type when ordering. See page 19 for vice types), does not include vice.

CSM Modular Work bench with Spreader Bar (1750L)



Order code: WB-B-1750G Galvanised Top

WB-B-1750P Plywood Top

(ICS-10-002)

CSM Modular Workbench with galvanised or plywood bench top and spreader bar.

Dimensions: 1750L x 750W x 890H

Comprises: 2 x powder coated welded steel leg sections.

Bench Top: 30mm thick plywood top or 33mm timber cored galvanised steel.

Leg Colour: Black

Leg Configuration: 2.5mm pressed metal

Pre drilling top with vice bolt hole pattern \$50 per vice (specify approximate position and vice type when ordering. See page 19 for vice types), does not include vice.



CSM Modular Work bench with Storage Cabinet (1750L)



Order codes: WB-SC-1750G Galvanised Top

WB-SC-1750P Plywood Top

(ICS-10-005)

CSM Modular Workbench with galvanised or plywood bench top, shelf and storage cabinet.

Dimensions: 1750L x 750W x 890H

Comprises: 1 x powder coated welded steel leg section.

Bench Top: 30mm thick plywood top or 33mm timber cored galvanised steel.

Lower Shelf: 600mm wide

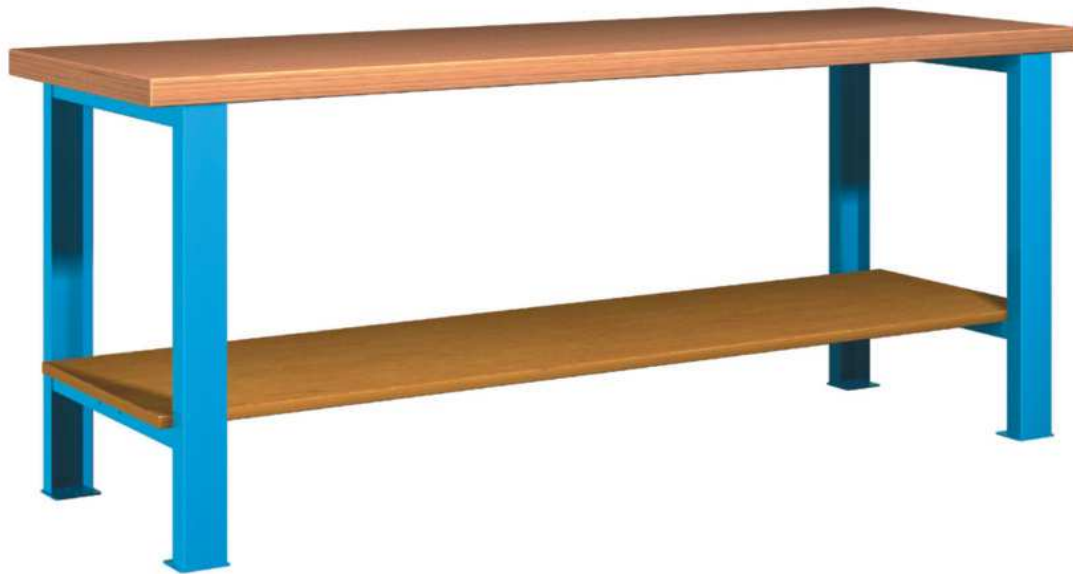
Leg Dimensions: 2.5mm pressed metal

Cabinet: 600mm door, two shelves and one 150mm drawer

Supplied unassembled with cabinet wrapped separately for easy transport and supplied with all fittings and hardware.

Pre drilling top with vice bolt hole pattern \$50 per vice (specify approximate position and vice type when ordering. See page 19 for vice types), does not include vice.

CSM Modular Work bench with Shelf (2000L)



Order codes: WB-S-2000G Galvanised Top

WB-S-2000P Plywood Top

(ICS-10-003)

CSM Modular Workbench with galvanised or plywood bench top and shelf.

Dimensions: 2000L x 750W x 890H

Comprises: 2 x powder coated welded steel leg sections.

Bench Top: 30mm thick plywood top or 33mm timber cored galvanised steel.

Lower Shelf: 600mm wide

Leg Colour: Black

Leg Configuration: 2.5mm pressed metal

Pre drilling top with vice bolt hole pattern \$50 per vice (specify approximate position and vice type when ordering. See page 19 for vice types), does not include vice.

CSM Modular Work bench with Spreader Bar (2000L)



Order codes: WB-B- 2000G Galvanised Top

WB-B- 2000P Plywood Top

(ICS-10-004)

CSM Modular Workbench with galvanised or plywood bench top and spreader bar.

Dimensions: 2000L x 750W x 890H

Comprises: 2 x powder coated welded steel leg sections.

Bench Top: 30mm thick plywood top or 33mm timber cored galvanised steel.

Leg Colour: Black

Leg Configuration: 2.5mm pressed metal

Pre drilling top with vice bolt hole pattern \$50 per vice (specify approximate position and vice type when ordering. See page 19 for vice types), does not include vice.

CSM Modular Work bench with Storage Cabinet (2000L)



Order codes: WB-SC- 2000G Galvanised Top

WB-SC- 2000P Plywood Top

(ICS-10-006)

CSM Modular Workbench with galvanised or plywood bench top, shelf and storage cabinet.

Dimensions: 2000L x 750W x 890H

Comprises: 1 x powder coated welded steel leg section.

Bench Top: 30mm thick plywood top or 33mm timber cored galvanised steel.

Lower Shelf: 600mm wide

Cabinet: 600mm door, two shelves and one 150mm drawer

Leg Configuration: 2.5mm pressed metal

Pre drilling top with vice bolt hole pattern \$50 per vice (specify approximate position and vice type when ordering. See page 19 for vice types), does not include vice.



CSM Vices

CSM 5" Mechanics Vice (No. 5)

Order Code: VM

(ICS-10-026)

Includes bolts, nuts and washers for bolting to standard bench tops



CSM 150mm Offset Vice (OS150) (woodworking)

Order Code: VW

(ICS-10-027)

Includes bolts, nuts and washers for bolting to standard bench tops





Cabinets & Heavy Duty Storage



CSM Open Free Standing Cabinet with 5 Shelves



**Order code: OFSC-ND
(ICS-10-009)**

Dimensions: 1995H x 1025W x 557D

Comprises four adjustable shelves, one fixed base shelf.

1.2mm steel construction for heavy duty purposes

Fully welded carcass for long term durability

CSM Free Standing Cabinet with 5 Shelves



Order code: FSC

(ICS-10-008)

Dimensions: 1995H x 1025W x 557D

Comprises four adjustable shelves, one fixed base shelf & two lockable doors.

Keying alike within product group is available on request – please specify at time of order.

1.2mm steel construction for heavy duty purposes

Fully welded carcass for long term durability

Office Use Only:
IDHDA199 (cabinets)
IDHDAS18743 (shelves)

CSM Free Standing Storage Cabinet with 5 Shelves & Power Outlets



Image Indicative Only

Order code: FSC-E

(ICS-10-008-E)

Dimensions: 2000H x 1026W x 555D

Comprises four fixed shelves and one fixed base shelf.

Includes 3 double power outlets on 4 shelves (12 double 10A power outlets)

RCD Protection. To be connected by a licensed electrician to electrical circuit

Keying alike within product group is available on request – please specify at time of order

1.2mm steel construction for heavy duty purposes

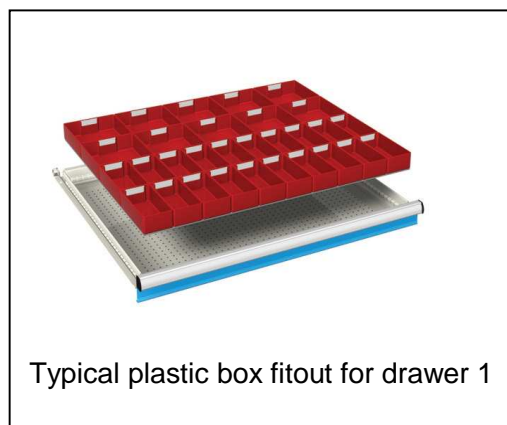
Office Use Only:
IDHDA199EL (cabinet)
IDHDAS3650 (shelves)
IDHDAS3651 ("cb)



CSM Free Standing Storage Cabinet with 7 Drawers, Pegboard and Storage Tub System



**Image
Indicative
Only**



Order code: FSC-ST5

(ICS-10-012)

Dimensions 2000h x 1116w x 554d

Drawers 7 @ 120mm d 75% extension, all drawers have anti tilt feature

Pegboard panels 4

Panel Hooks 20

Storage tub rails 8

Storage tubs 28 @ size 1

3 @ size 3

Supplied with storage boxes to Drawer 1

Tools not included

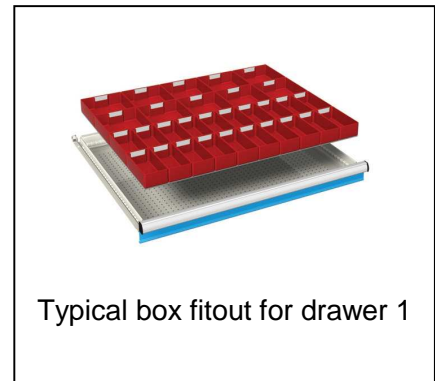
Keying alike within product group is available on request – please specify at time of order

1.2mm steel construction for heavy duty purposes

Office Use Only:
1 x IDHDA199
7 x IDHDA53696
2 x IDHDA18742
2 x IDHDA18741
8 x IDHDA18489



CSM Modular Heavy Duty Storage Cabinet System with Shelves and Drawers



Order code: HDC-001

(ICS-10-010)

Supplied unassembled

Dimensions 2000h x 1116w x 554d

Drawer types 2 @ 100d - 75% extension

2 @ 200d - 75% extension

1 @ 300d - 75% extension

Drawers are centrally locked and features an anti tilt mechanism.

Shelf type – open front, includes one fixed and three adjustable shelves

Supplied with storage boxes to Drawer 1

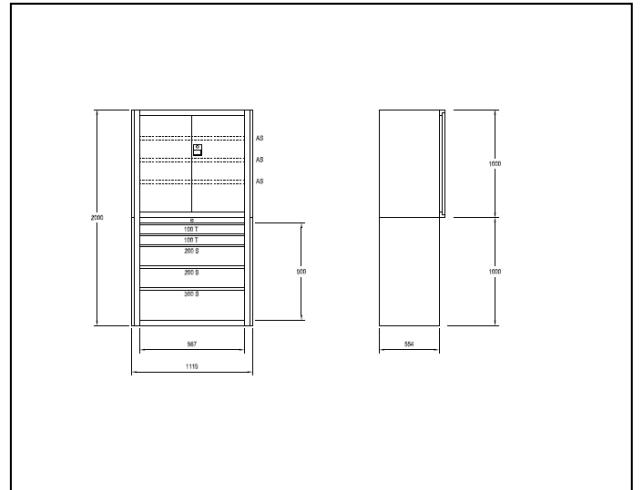
1.2mm steel construction for heavy duty purposes

*** Specifications subject to change without notice**



CSM Modular Heavy Duty Storage Cabinet System with Shelves, Drawers and Leaf Doors to Secure Shelves

Schematic below shows leaf door configuration for shelf lock up security



Order code: HDC-002

(ICS-10-011)

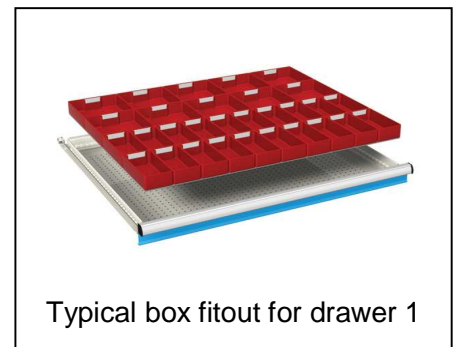
Supplied unassembled

Overall dimensions 2000h x 1116w x 554d

Drawer types 2 @ 100d - 100% extension

2 @ 200d - 75% extension

1 @ 300d - 75% extension



Typical box fitout for drawer 1

Drawers are centrally locked and features an anti tilt mechanism.

Shelf type – open front with lockable leaf doors, includes one fixed and three adjustable shelves

Supplied with storage boxes to Drawer 1

1.2mm steel construction for heavy duty purposes

*** Specifications subject to change without notice**



CSM Mobile Modular Storage Cabinet



**Image Indicative Only
Drawer sizes may differ**

Order code: MMSC

Overall dimensions 5 drawers 800h x 564w x 572d
Heavy Duty Castors
75mm extension on drawers

Other cabinets available in varying configurations

Made of high quality sheet steel. Housing sides and bases are welded and painted with high resistance products, environmentally friendly.

Complete with handle and pair of castors (2 swivel braked and 2 fixed) in nylon or rubber. Equipped with central locking system, safety cylinder lock with 2 keys and single drawer opening system.

Drawer load capacity varies from 60kg – 200kg

2 types of drawer runner

- Standard Extension 85%-90%
- Full Extension 100%



CSM Modular Storage Cabinet



Order code: **MSC**

Overall dimensions

4 drawers 700h x 1023w x 725d

All drawers are full clearance and lockable

Contains an anti-tilt mechanism

Load capacity of the drawers is up to 200kg

1.2mm steel construction for heavy duty purposes

Drawer load capacity varies from 80kg – 200kg

2 types of drawer runner

- Standard Extension 85%-90%

- Full Extension 100%

Other cabinets available in varying configurations



Mobile & Tool Racking

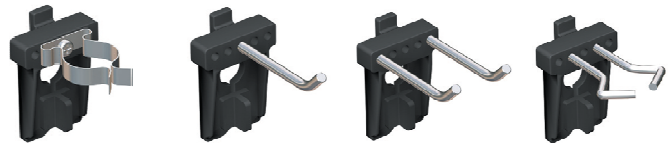




CSM Mobile Storage Rack



This schematic is an alternative configuration to the item described below.



Hook Types Available

Order code: MSR

(ICS-10-021)

Configuration of 1 side with perforated panel for tool hooks and the other side configured for storage tubs

Includes;

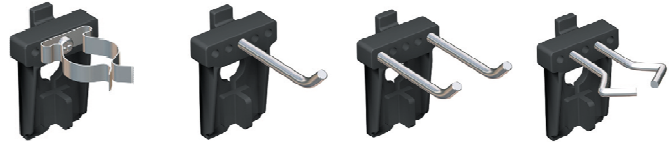
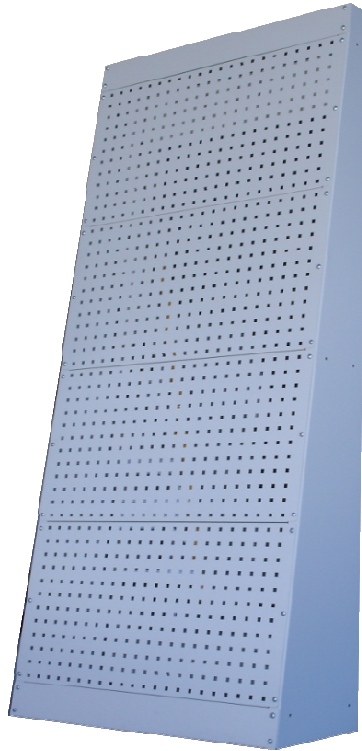
20 mixed tool hooks

5 container rails

12	size 1 containers	95w x 75h x 140d blue
8	size 2 containers	140w x 130h x 200d blue
3	size 3 containers	200w x 200h x 300d blue



CSM Tool Wall



Hook Types Available

Order code: TW

Configuration of 1 side with perforated panel for tool hooks

Dimension: 1995h x 900w x 400d

Office Use Only:
IDTRA199



Shelving





CSM Light Duty Shelving System – for School Bag storage



Dimension

Order code: SS07

2210h x 757w x 425d (5 Shelves)

Order code: SS09

2210h x 909w x 425d (5 Shelves)

Order code: SS12

2210h x 1214w x 425d (5 Shelves)

(ICS-10-022)

Other sizes available on application

Note: Runs priced on application

Supplied unassembled



CSM Welded Infinity Book Shelving System



Dimension

Order code: IBC-1975	1975h x 900w x 500d (5 Shelves)
Order code: IBC-1675	1675h x 900w x 500d (4 Shelves)
Order code: IBC-1355	1355h x 900w x 500d (3 Shelves)
Order code: IBC-1035	1035h x 900w x 500d (2 Shelves)

(ICS-10-024)

Fitted with adjustable shelves

Supplied fully assembled

(Dividers not included)



CSM Long Span Shelving

CSM span shelving clips together for easy assembly. Rated load is 100kg per shelf.



Fitted with 5 Shelves
per Bay

System components

Dimension

Order code: LSS-SB-1200 (ICS-10-013)	2100h x 1200w x 600d starter bay
Order code: LSS-EB-1200 (ICS-10-014)	2100h x 1200w x 600d extension bay
Order code: LSS-SB-1245 (ICS-10-015)	2100h x 1200w x 450d starter bay
Order code: LSS-EB-1245 (ICS-10-016)	2100h x 1200w x 450d extension bay
Order code: LSS-SB-0900 (ICS-10-017)	2100h x 900w x 600d starter bay
Order code: LSS-EB-0900 (ICS-10-018)	2100h x 900w x 600d extension bay
Order code: LSS-SB-0945 (ICS-10-019)	2100h x 900w x 450d starter bay
Order code: LSS-EB-0945 (ICS-10-020)	2100h x 900w x 450d extension bay

Supplied unassembled

Steel Shelves, Colour – Off White

Beams and Posts, Colour – Dark Grey

Note: Extension bays can only work with a starter bay. All extension bays must be the same depth as the starter bay for the shelving system.



High Density Storage, Lockers & Flammable Liquids Cabinets





CSM Self Based Rolling Storage Unit



Order code: RS

(ICS-10-025)

6 Bay Mechanical Assist Self Based Rolling Storage Unit - Configuration one single mobile, Two double mobile bays (back to back), One single static (fixed bay).
Fitted with 5 Shelves per bay providing 6 Storage Levels and strengthened to carry up to 100kgs per storage level
Fitted with 1x Lock – specific locking bay on left or right
Decorative Ends on one side
Incorporates track, bearings, rollers and leveling mechanisms
Units are of knockdown type which can be easily relocated & extended
No fixing of unit to walls or floors required
Own integral structure
Crinoline insert within track section for life time wear
Modular sizing & configuration
Rolled post construction for strength and non-restrictive access
Track has incorporated anti tilt / guide wheel assembly

Note: Other sizes and configurations available on application

Other options available for lighter applications



Lockers

CSM lockers are available in a range of sizes, door sizes and configurations to maximize locker quantities.



Zirconium Lockers **Order code: LOC-ZIR** **Bank of 3 x 3 Tier** **(ICS-10-028)**

1800h x 900w x 450d

Also available in Single, 2 and 4 door configurations.

Bench Seating

Order Code: Bench – P.O.A.

450h x 1600w x 450d

Other sizes are available on application





Opal Lockers (L-Shape Door), Bench also available as an option

Opal Lockers
Order code: LOC-OP
P.O.A.
(ICS-10-028)

1800h x 400w x 450d

(With Laminate L-Shape Doors,
steel carcass)

1800h x 400w x 450d

(2 door lockers displayed)

3 and 4 Door options are also available

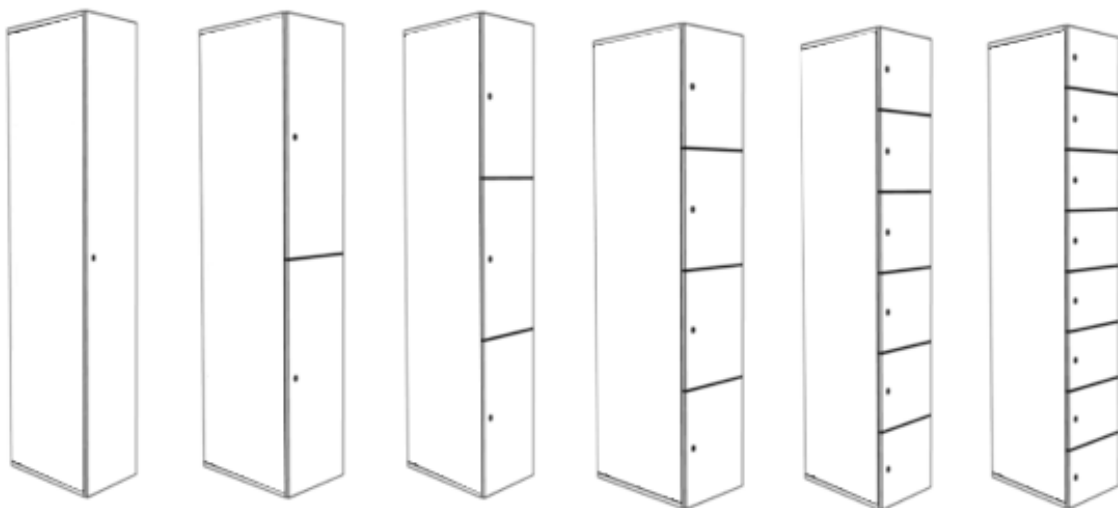


Opal Lockers (Standard Door)

Locking Options

<p>Standard Cam/ Barrel Lock</p> 	<p>Handle Locks</p> 	<p>Provision for Padlock</p> 	<p>V200 Combination Battery Lock</p> 
--	---	---	--

Configurations (Standard door Locker)





Flammable Liquids Cabinet – 250L

Order code: FLC-250L

(ICS-10-0)

Dimensions:

External 1825mm H x 1100mm W x 500mm D
Internal 1545mm H x 1015mm W x 420mm D

Weight: 187Kg

Complies with AS1940-2004

Suitable for storage of:

1. Petrol & Petroleum Derivates
2. Adhesives
3. Printing Inks and Solvents
4. Paints and Solvents
5. Any Class 3 Liquids

Fully welded, deep liquid tight sump

3 shelves

Ventilation Port

Welded Shelf Bracket

Built-in Ground Connector

Self Closing Mechanism

Three Point self latching locking system baked enamel lead free paint inside and out (yellow)

100L are also available

Delivery considerations:

Must have a forklift or equivalent to accept delivery of these cabinets.

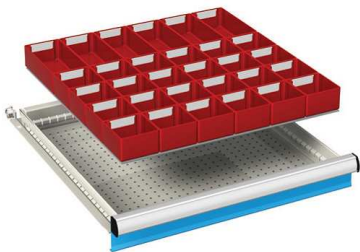
Delivered to ground floor or loading dock only.



Indicative representation only



Accessories



Quick Release Peg Board Hooks - P.O.A.



Rails for Plastic Containers - P.O.A.



Individual Drawer Fit out Options - P.O.A.

